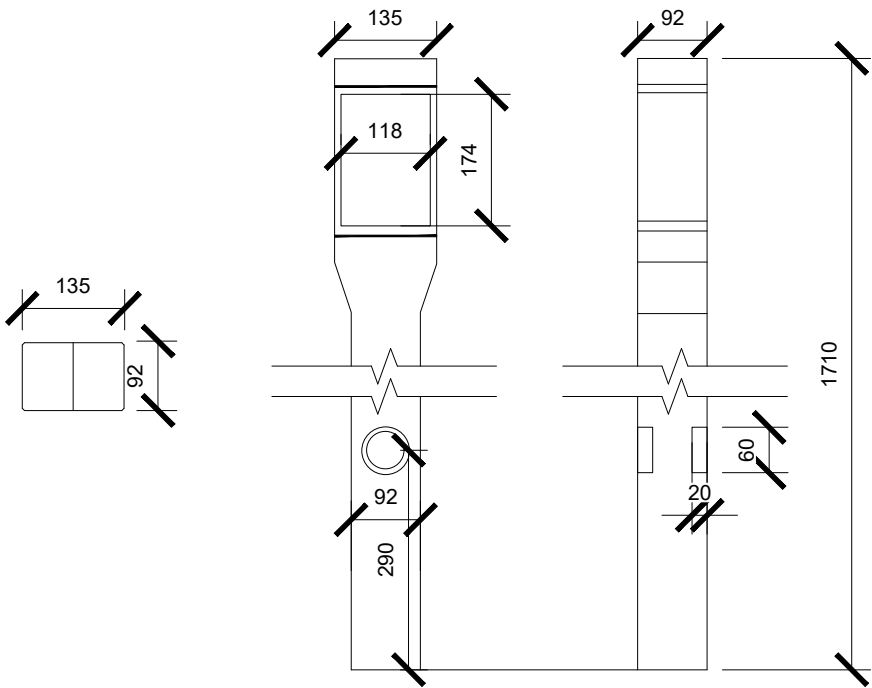


Notes :

- 1. Marker posts as per ESB Networks specifications. Specific marker posts will be provided warning of the presence of a communications chamber underneath.
- 2. Templates are to be used to maintain the trefoil arrangement when laying the ducts.
- 3. Marker posts to be places at every water course / cable crossings.





CABLE MARKER POST
SCALE 1:1



CABLE MARKER POST DETAIL
SCALE 1:10

DO NOT SCALE FROM THIS DRAWING. USE FIGURED DIMENSIONS IN ALL CASES. VERIFY DIMENSIONS ON SITE AND REPORT ANY DISCREPANCIES TO THE DESIGNERS IMMEDIATELY.
THIS DRAWING TO BE READ IN CONJUNCTION WITH THE DESIGNERS SPECIFICATION.
© THIS DRAWING IS COPYRIGHT AND MAY ONLY BE REPRODUCED WITH THE DESIGNERS PERMISSION.

01	28/11/24	ISSUED FOR PLANNING	PD	CM	
REV	DATE	DESCRIPTION	BY	APP	
CLIENT					
 					



ENGINEERING AND ENVIRONMENTAL CONSULTANTS

CORK | TRALEE | LONDON | LIMERICK

mwp.ie

PROJECT:	SCEIRDE ROCKS OFFSHORE WIND FARM
TITLE:	CABLE MARKER POST DETAIL

DRAWN:	P.D.	CHECKED:	M.McC.	APPROVED:	C.M.
PROJECT NUMBER:	24204	DATE:	FEB '24	SCALE @ A3:	AS SHOWN
STATUS DESCRIPTION				STATUS:	
FOR PLANNING				S4	
DRAWING NUMBER:					REV:
IRE1 - HMV - ONC - EL - PD - 4000					01